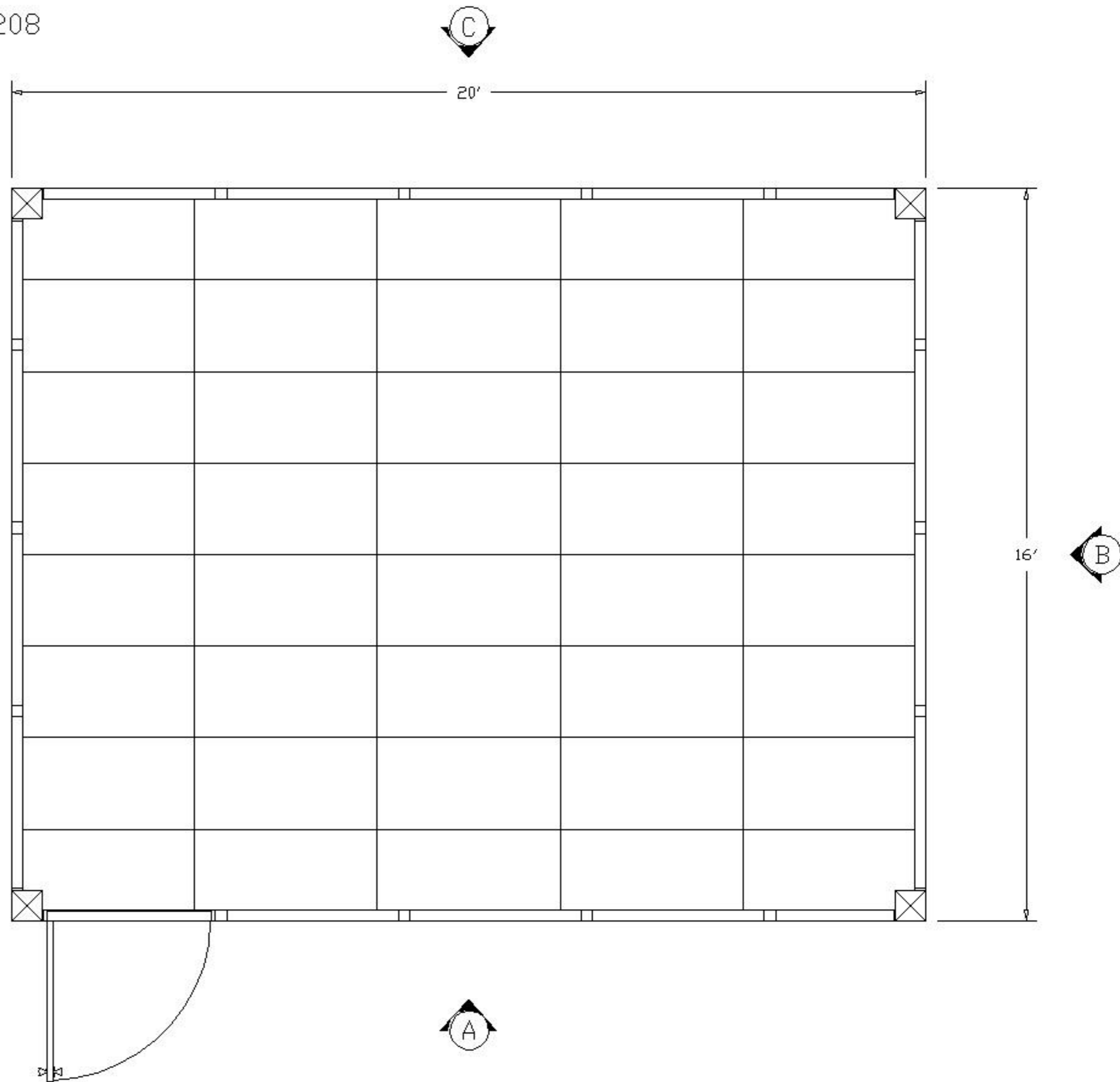
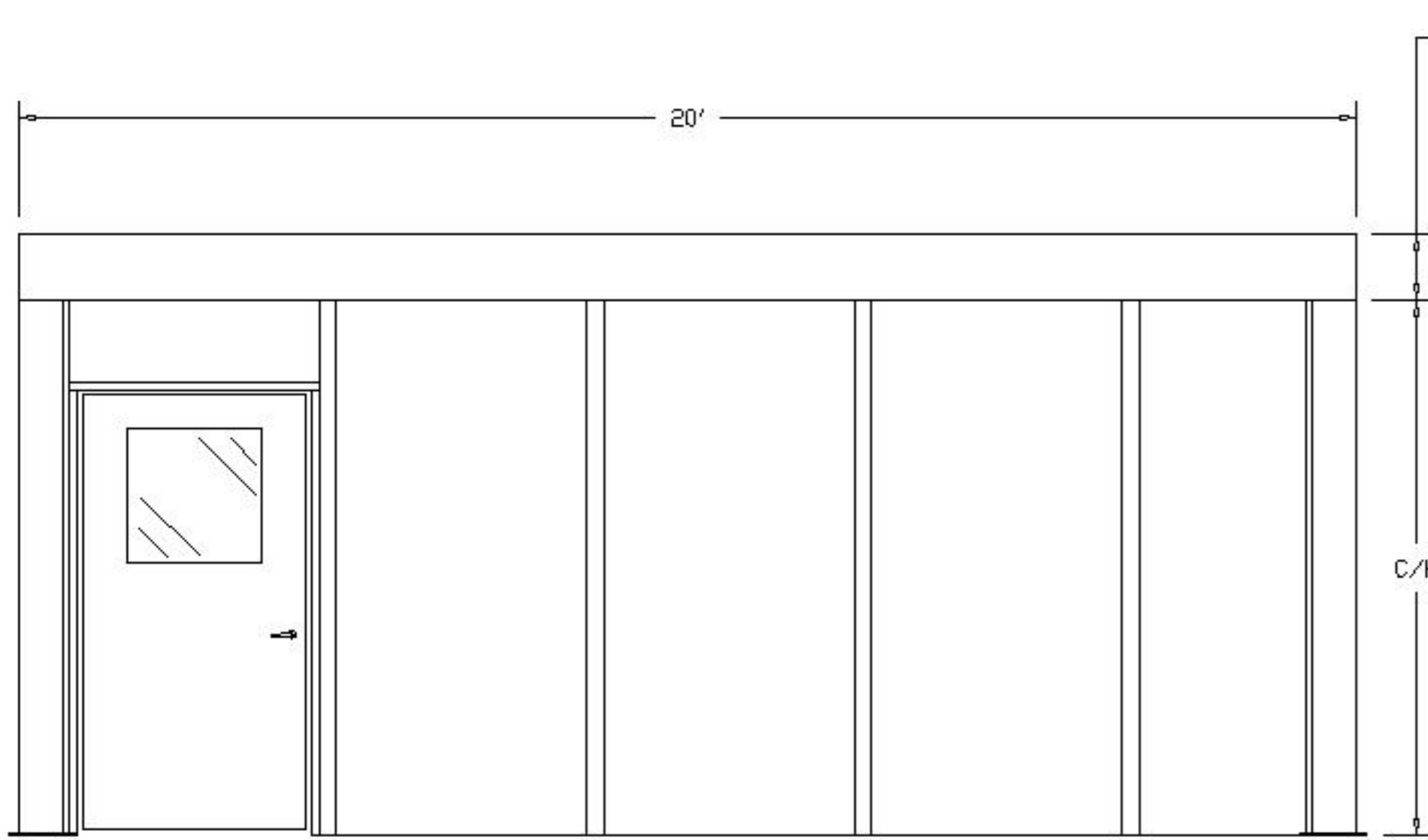


PLEASE MARK DESIRED LOCATION OF OPTIONS
 SHOWN IN LEGEND ON FLOOR PLAN
 IP3-STM-16208

DESCRIPTION	SYMBOL	DESIGNATION
208V OUTLET	⊕	⊕
TYP. EMERGENCY FLOOD LIGHTS	⊞	E/L
120V DUPLEX OUTLET	⊖	⊖
LIGHT SWITCH	\$	\$
MAIN PANEL	PNL	PNL
TYP. 2' X 4' LAY IN 4 TUBE LIGHT FIXTURE	⊞	L/F
THRU WALL HVAC UNIT	HVAC	HVAC
8" SQ. TUBE STEEL COLUMN	⊞	



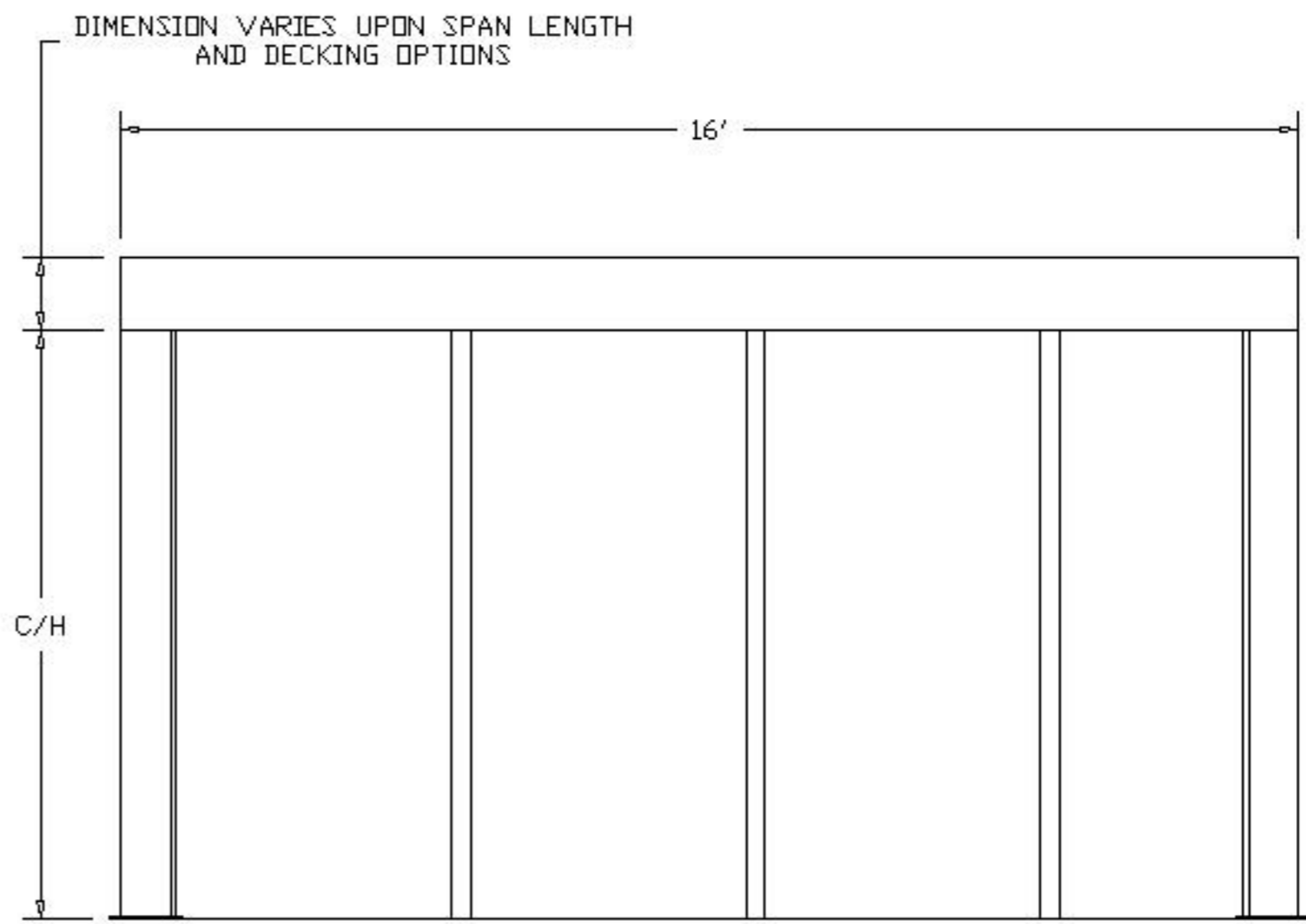


"A" ELEVATION

DIMENSION VARIES UPON SPAN LENGTH
AND DECKING OPTIONS

C/H SPECIFY CLEAR HEIGHT
(STANDARD IS 8')




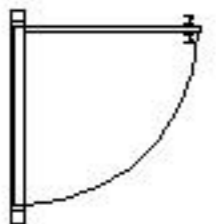
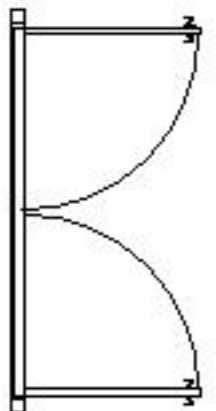

IP3-STM-16208

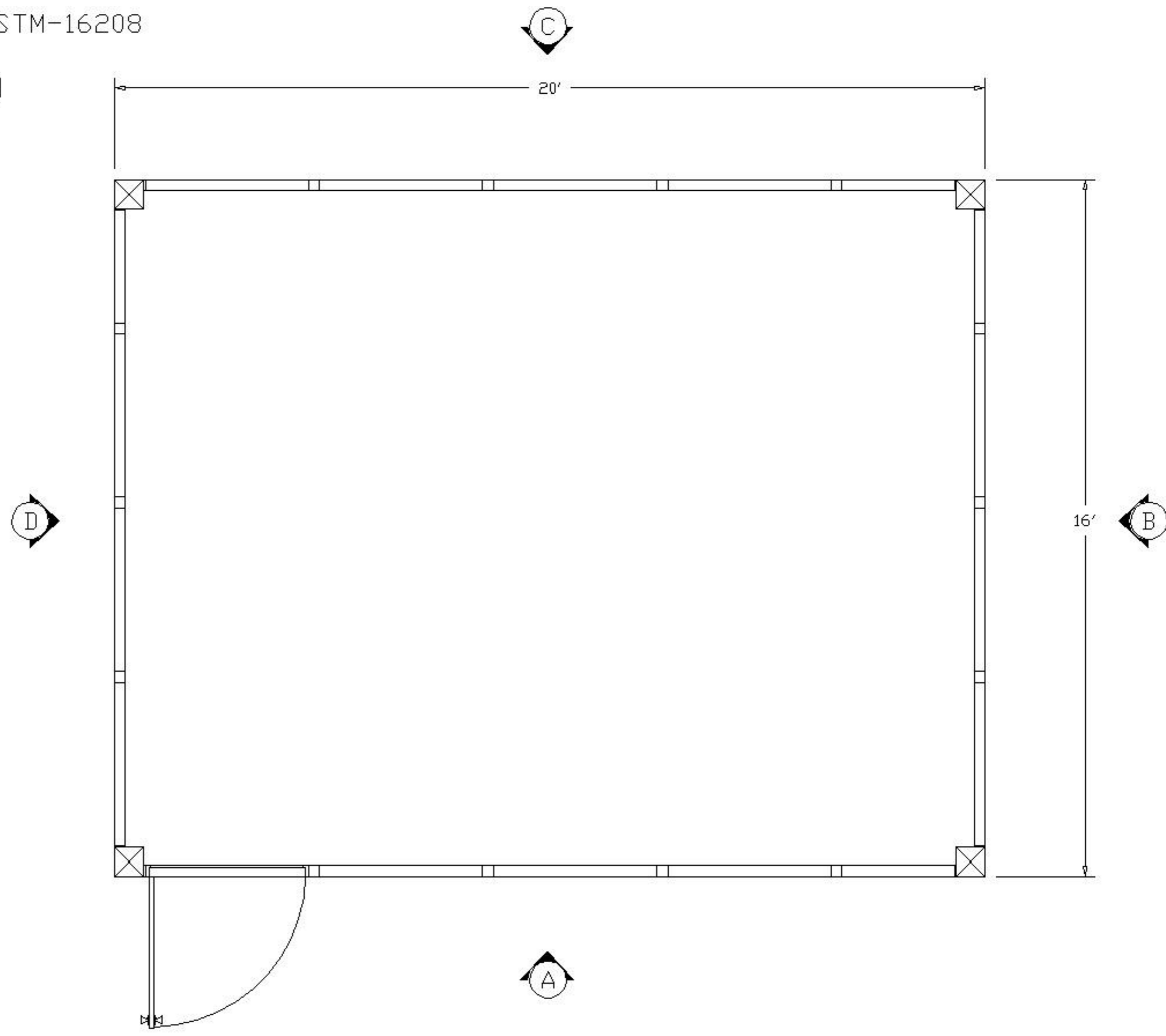


"B" ELEVATION



DIMENSION VARIES UPON SPAN LENGTH
AND DECKING OPTIONS

PLEASE MARK DESIRED LOCATION OF OPTIONS
 SHOWN IN LEGEND ON FLOOR PLAN
 IP3-STM-16208

DESCRIPTION	SYMBOL	DESIGNATION
WINDOW PANEL =		W/P
SLIDING WINDOW PANEL =		SW/P
SOLID PANEL =		S/P
42" X 80" DOOR W/ 2' X 2' WINDOW =		D/L
DOUBLE DOOR W/ 2' X 2' WINDOW =		DD/L
8" SQ. TUBE STEEL COLUMN =		



PLEASE MARK DESIRED LOCATION OF OPTIONS
 SHOWN IN LEGEND ON FLOOR PLAN
 IP3-STM-16208

DESCRIPTION	SYMBOL	DESIGNATION
TYP. 2'X4'x5/8" MINERAL BOARD CEILING TILE =		C/T
TYP. 2' X 4' LAY IN 4 TUBE LIGHT FIXTURE =		L/F
8" SQ. TUBE STEEL COLUMN =	